

Palmas 240, Mexico City

+52 55 7211 6162 comercial@eirecapital.com 

Monthly Rent:

MXN \$495,000 (full property)
MXN \$300,000 (ground floor only)



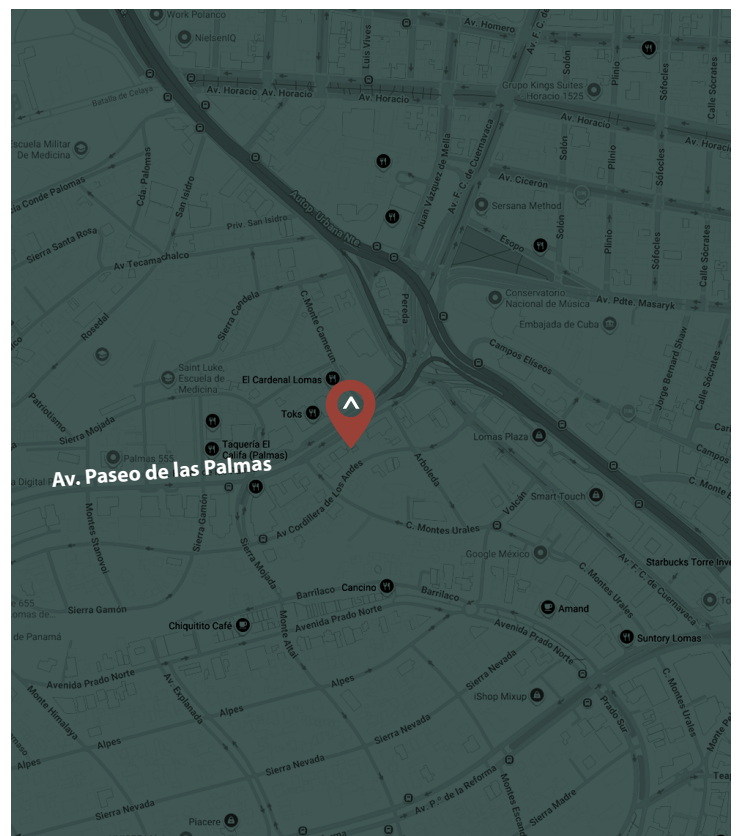
Address:

**240 Paseo de las Palmas Ave,
 Lomas-Verreyes, Lomas de Chapultepec,
 Miguel Hidalgo, 11000, Mexico City,
 CDMX, Mexico**



Located at Av. Paseo de las Palmas 240, one of the most emblematic avenues with a strong corporate profile in Mexico City, this retail space offers a premium location with high traffic and excellent visibility.

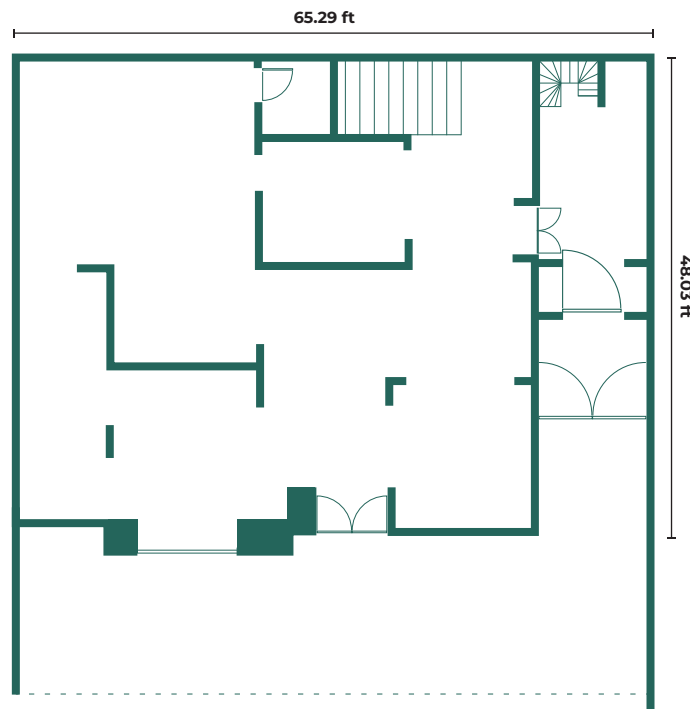
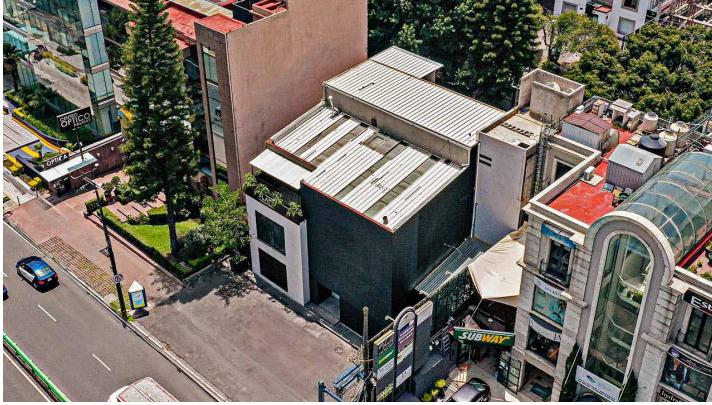
With 9,042 sq ft (840 m²) distributed across four levels and parking directly at the storefront, the property combines presence, accessibility, and operational flexibility.

Its proximity to Polanco and immediate access to Anillo Periférico position it as a strategic option for brands seeking to establish a presence in one of the city's most important commercial and corporate corridors.



Palmas 240, Mexico City

+52 55 7211 6162 
comercial@eirecapital.com 

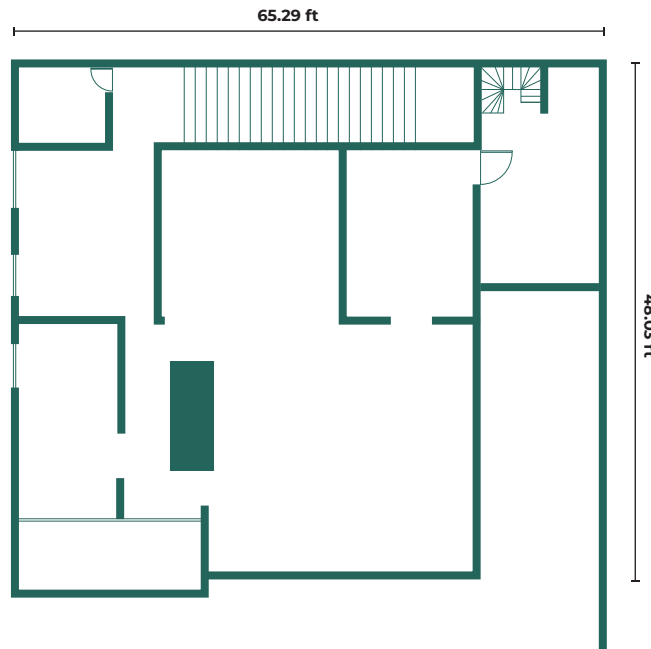


GROUND FLOOR

Palmas 240, Mexico City



FIRST FLOOR



SECOND FLOOR