

16 de Septiembre, Mexico City

+52 55 7211 6162 comercial@eirecapital.com 

✓ **PRIME LOCATION BETWEEN BELLAS ARTES AND ZÓCALO**

✓ **JUST ONE BLOCK FROM MADERO, ONE OF THE BUSIEST COMMERCIAL CORRIDORS FOR PEDESTRIAN TRAFFIC.**

Rentable Area: **12,917 sq ft (across 3 levels)**

Frontage: **39.37 ft**

Monthly Rent: **MX\$680,000 (entire property)**

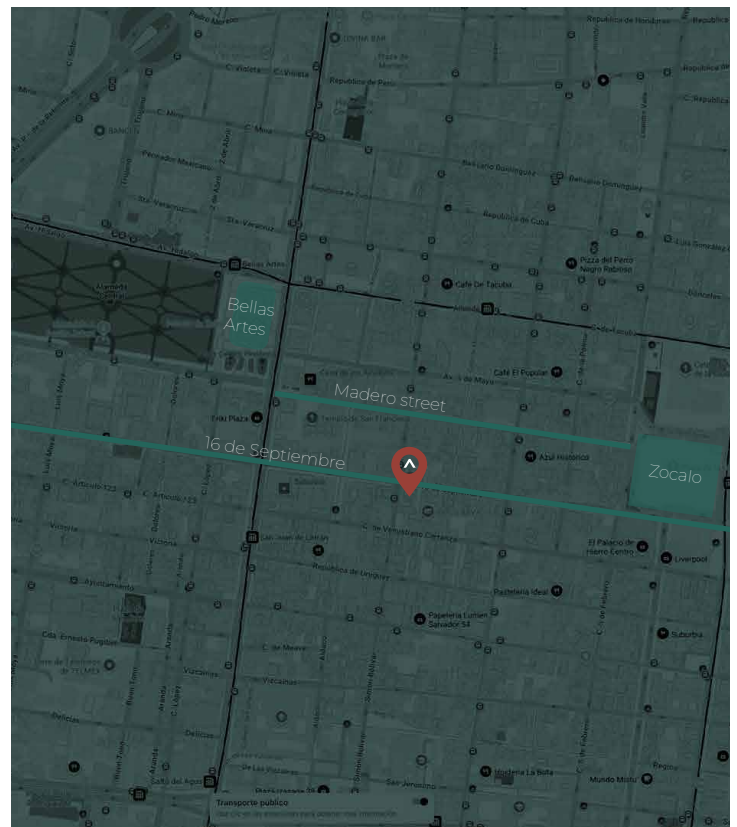
Located on Av. 16 de Septiembre #37, in the heart of Mexico City's Historic Center, this retail space offers a truly premium position within one of the most dynamic pedestrian and tourist corridors in the country.

Situated between Alameda Central and the Zócalo, just one block from Madero Street—one of the highest pedestrian flow commercial corridors in Mexico—and two blocks from Eje Central Lázaro Cárdenas, the property benefits from unmatched foot traffic in a high-demand commercial zone.

With 12,917 sq ft (1,200 m²) across three levels, it represents a unique opportunity for brands seeking a flagship presence.

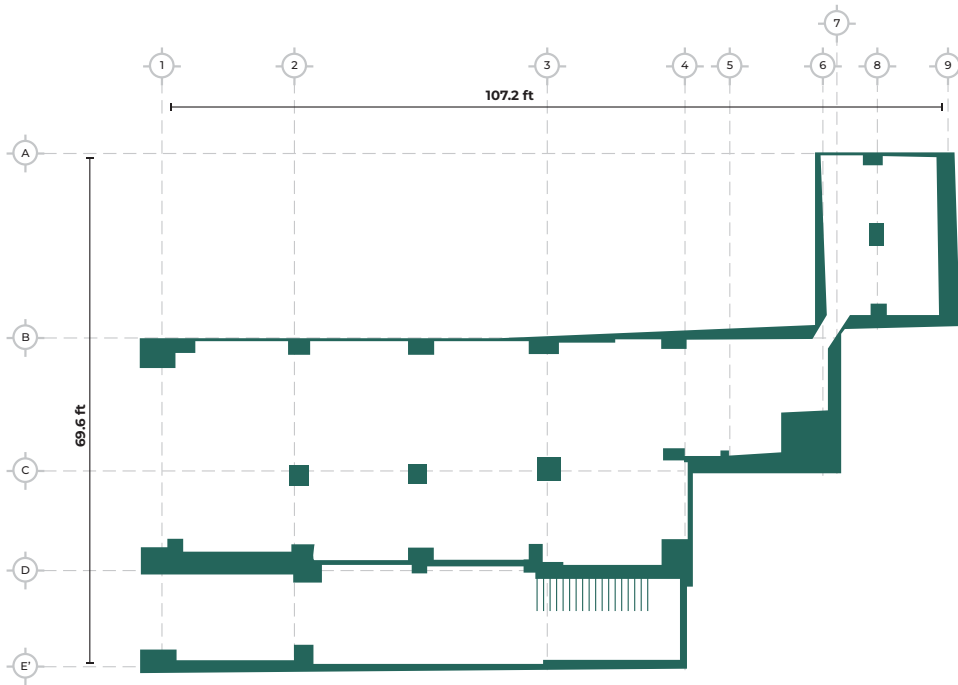


Address: **16 de Septiembre 37, Historic Center, ZIP Code 06000, Mexico City**



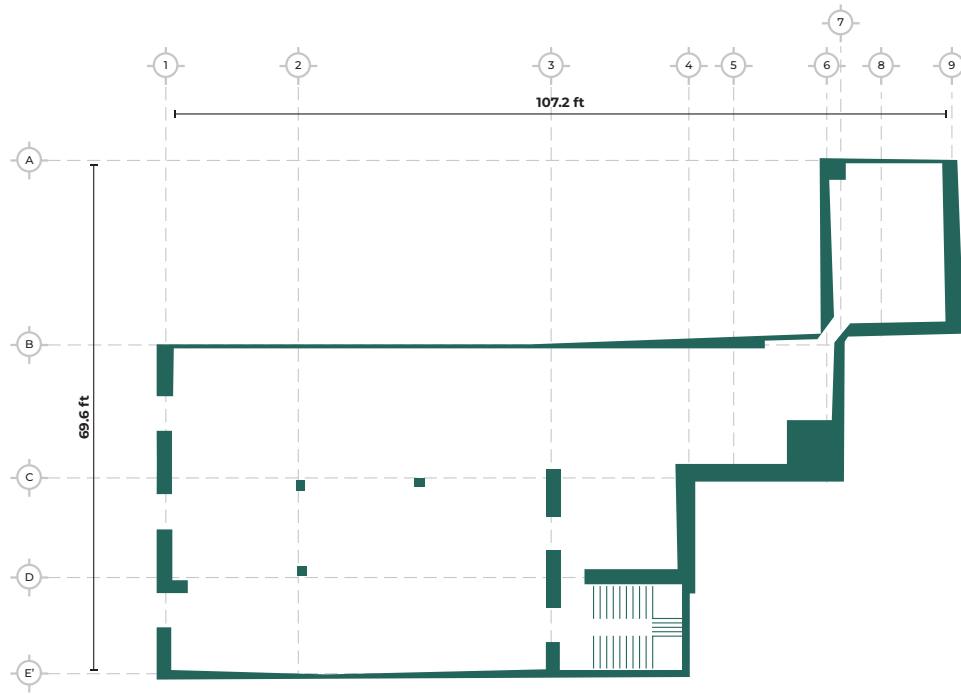
16 de Septiembre, Mexico City

+52 55 7211 6162 
comercial@eirecapital.com 

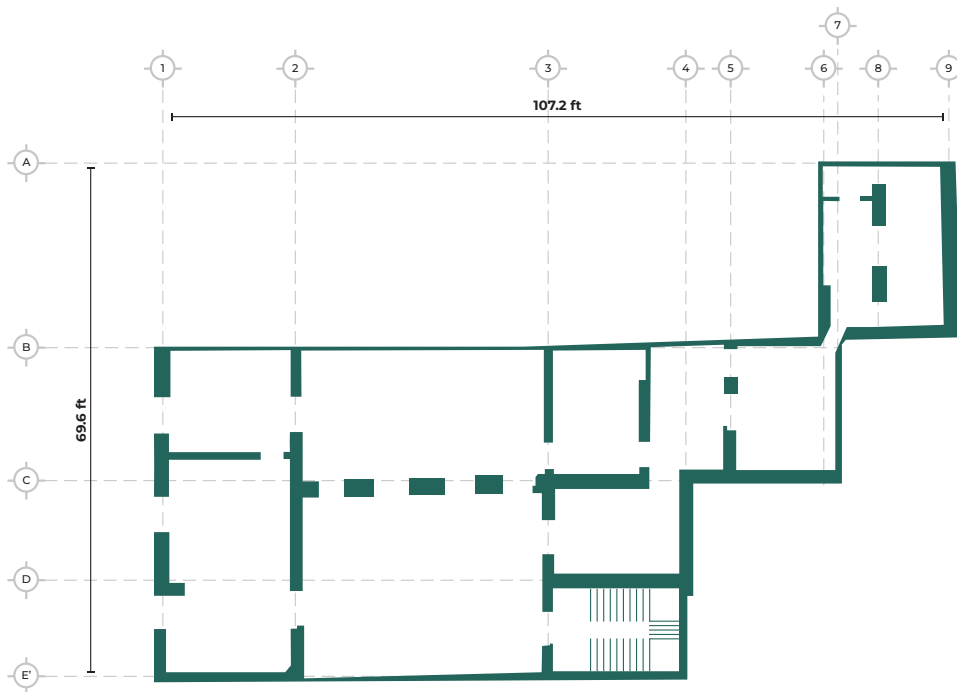


GROUND FLOOR

16 de Septiembre, Mexico City



FIRST FLOOR



SECOND FLOOR